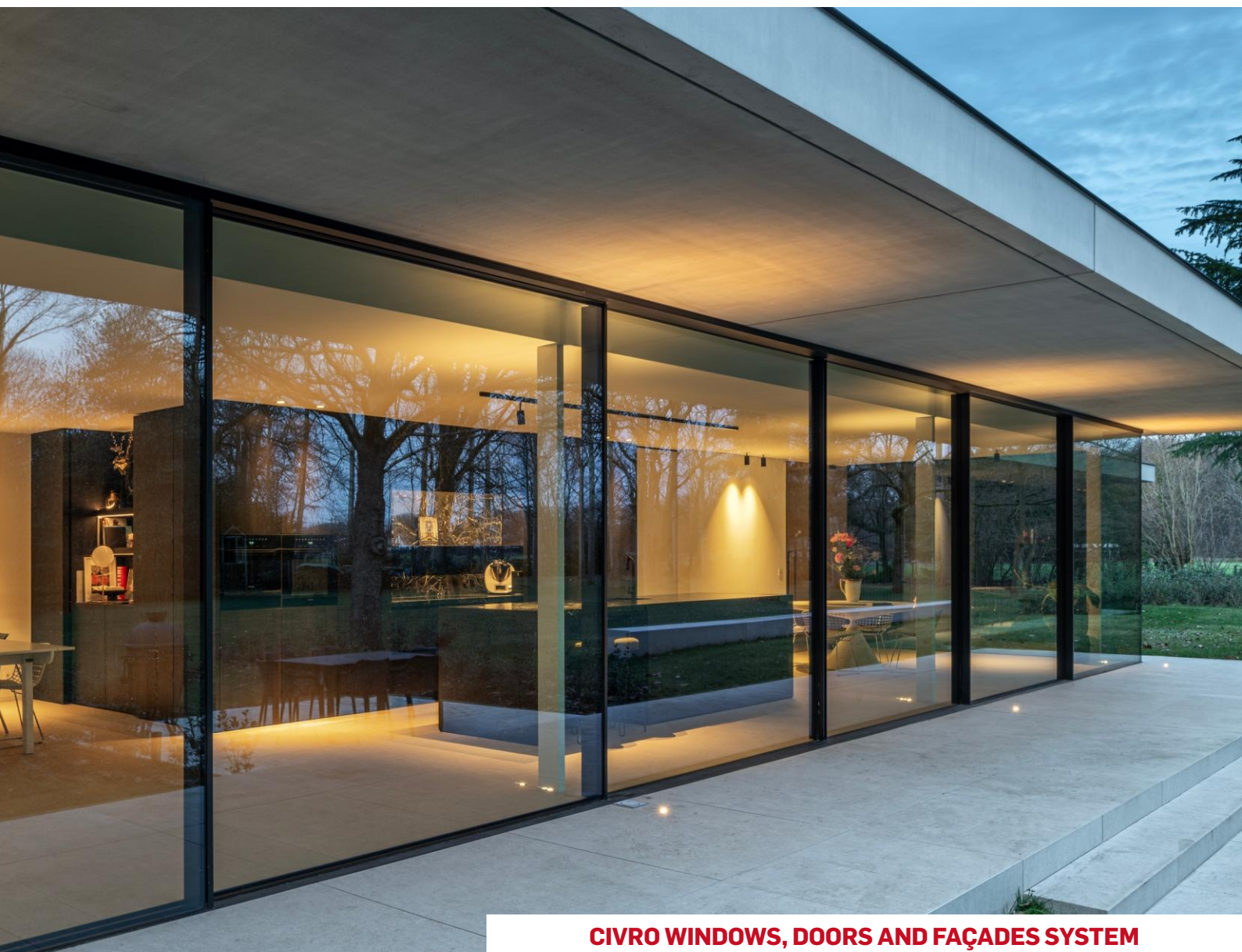


 **CIVRO.**



**CIVRO WINDOWS, DOORS AND FAÇADES SYSTEM**

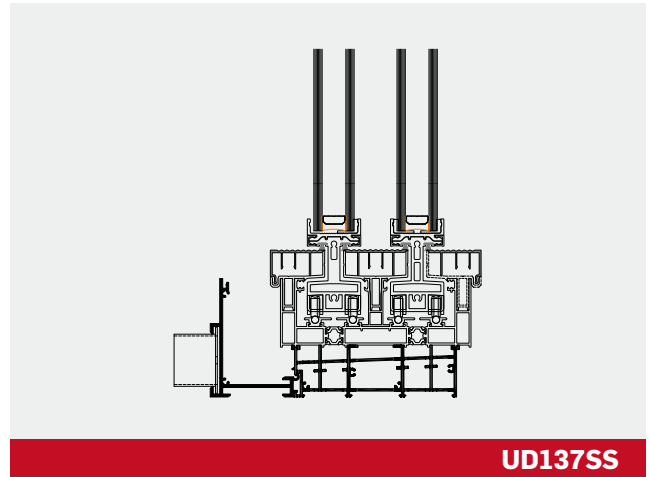
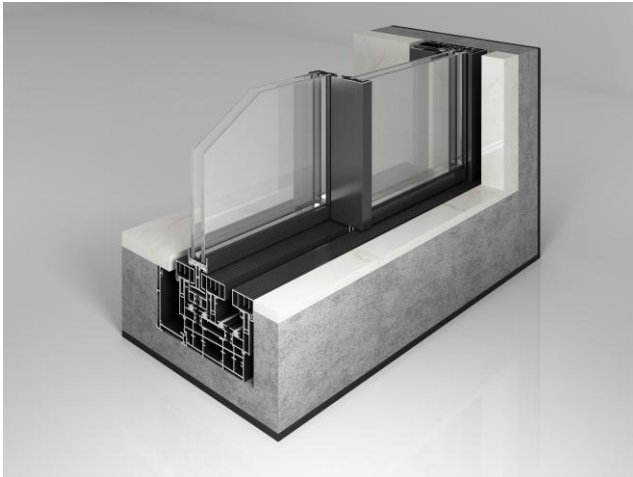
**UD137/UD207 CIVRO-ORAMA  
SLIDING SYSTEM**

# THE PERFECT COMBINATION OF MINIMALISM AND PERFORMANCE

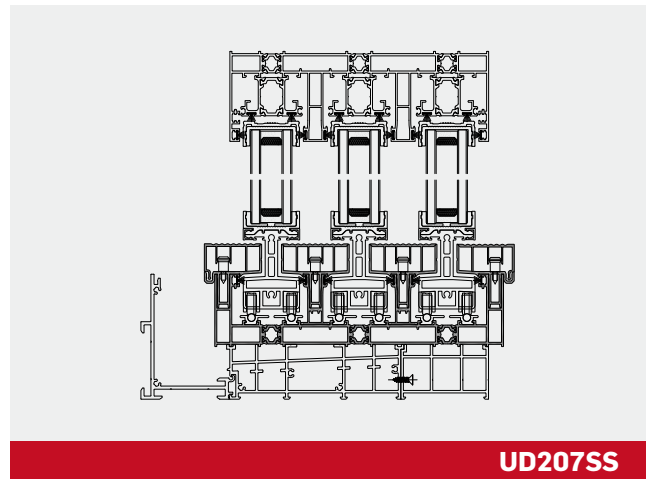
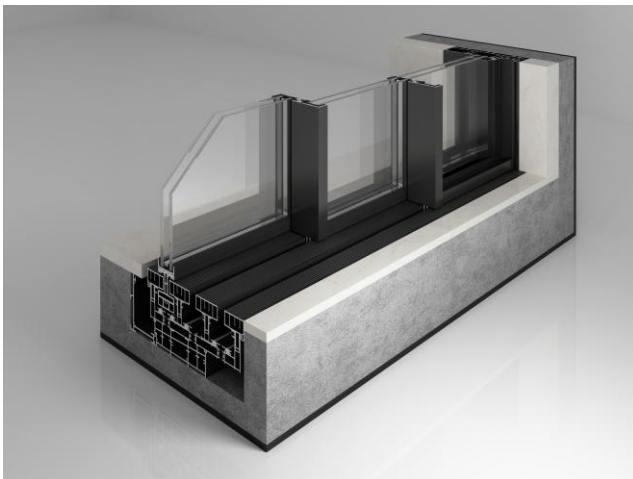
The UD137&UD207 by CIVRO-ORAMA epitomizes the pinnacle of modern architectural design with its ultra-slim frame sliding doors. Engineered with precision and crafted to perfection, this series is designed to provide unobstructed panoramic views while seamlessly blending indoor and outdoor spaces. The system features advanced thermal insulation and state-of-the-art sealing technology, ensuring optimal energy efficiency and weather resistance. It is ideal for contemporary homes and commercial spaces, enhancing the visual appeal of any environment, delivering both style and functionality.

## PLANNING HIGHLIGHTS

- A minimum profile width at 24mm and a maximum track visibility at 4mm
- Over 18 sliding opening options are available to meet any architectural requirements
- Each sliding leaf running on at least 8 stainless steel wheels
- Trouble-free and invisible water drainage
- Two-point locking device for additional safety
- Adjustable base to assemble and install quickly
- Easy maintenance-the wheels can be accessed from the side of the frame with a simple lift
- The special concealed gutter allows a large amount of water to drain



UD137SS



UD207SS

## TECHNICAL PERFORMANCE

### PROFILE TECHNOLOGY

- 6060 T66 aluminium profile
- All profile parts thermally broken
- Basic depth 137mm (double track) and 207mm (triple track)
- Exclusive MED (Matte Electro Deposition) coating gives the finest and smoothest tactile impression

### THERMAL INSULATION

- PA66GF25 thermal insulating strip, C14.8

### OPENING OPTIONS

- Sliding

### GASKET CONCEPT

- 2 PVC profiles apply to the interlock section
- Silicon gaskets are used in the place where usually only brushes are used

### HARDWARE

- Tailored minimalist handle



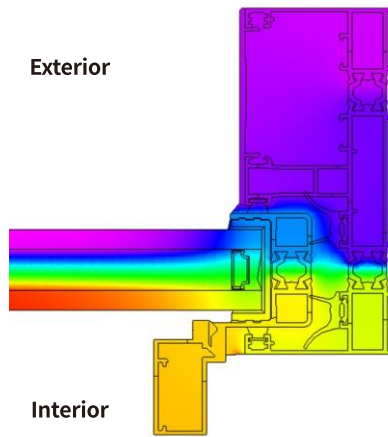
black

- Tailored 2-point BT lock
- Max. vent weight: 1000Kg with stainless steel tracks
- Dual stainless steel rollers on each side of each vent

### ADD-ONS

- Flyscreen
- Motorised hardware fitting
- Pocket door

# THERMAL COMPUTATION



## UD137SS

12.0 6.2 0.4 -5.4 -11.2 -17.0 °C



■ **Ug**

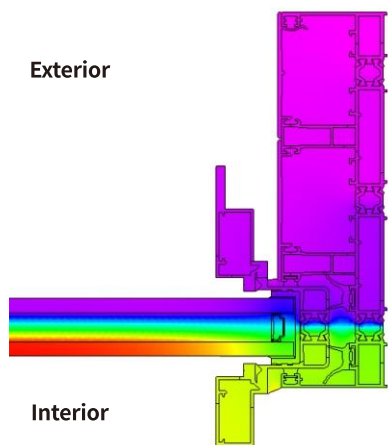
1.477W/(m<sup>2</sup>·K)

■ **Glass type**

8G+16Ar+8G Low-E (warm edge spacer)

■ **Thermal insulating strip**

C14.8



## UD207SS

12.0 5.9 -0.2 -6.3 -12.4 -18.5 °C



■ **Ug**

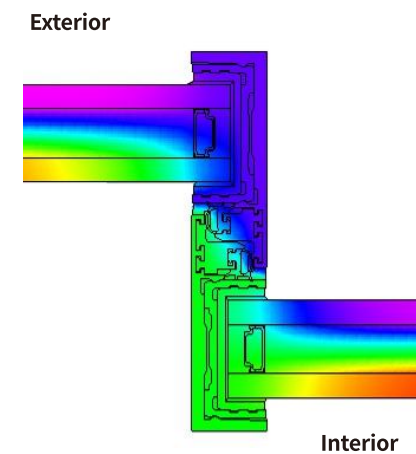
1.477W/(m<sup>2</sup>·K)

■ **Glass type**

8G+16Ar+8G Low-E (warm edge spacer)

■ **Thermal insulating strip**

C14.8



## UD137SS & UD207SS

12.3 6.4 0.5 -5.4 -11.3 -17.2 °C



■ **Ug**

1.477W/(m<sup>2</sup>·K)

■ **Glass type**

8G+16Ar+8G Low-E (warm edge spacer)

■ **Thermal insulating strip**

C14.8

# OVERVIEW OF UD137/UD207 SLIDING SYSTEM

	UD137SS	UD207SS
<b>✂ DESIGN</b>		
Opening	Sliding	Sliding
Min.-max. basic depth(mm)	137	207
Vent depth(mm)	45	45
Face width of interlock section(mm)	24	24
Face width of frame(mm)	0/58	0/58
Face width of vent frame(mm)	28	28
Face width of top outer frame(mm)	72	72
Face width of bottom outer frame(mm)	0/58	0/58
Min.-max. face width of mullion(mm)	0/58	0/58
Threshold height(mm)	0/58	0/58
Reinforcement interlock section	■	■
Number of tracks	Double track	Triple track
Concealed drainage	■	■
Ventilation vent	/	/
Integral glass guardrail	/	/
Fly screen	■	■
Surface finish	MED , CPG	MED , CPG
<b>🏠 IMPLEMENT SCENARIO</b>		
Façade insert unit	■	■
Conservatory insert unit	■	■
<b>📏 PARAMETER</b>		
U values in W/m <sup>2</sup> K	1.2	1.2
Sound reduction(dB)depending on glazing type	42	42
Air permeability(m <sup>3</sup> /(m.h))	0.9	0.9
Water tightness(Pa)	400	400
Wind load resistance(KPa)	≤4.0	≤4.0
Burglar resistance	RC2	RC2
<b>📊 VENT DATA</b>		
Min.-max. vent height(mm)	3500	3500
Min.-max. vent width(mm)	1000-3000	1000-3000
Max. vent size(m2)	9	9
Max. vent weight(Kg)	1000	1000
Min.-max. glass thickness(mm)	30-36	30-36

# SINCE 1993

CIVRO has accumulated over 30 years of experience in the research, development, and production of system doors and windows. Embracing the pioneering concept of global system doors, windows, and curtain walls, CIVRO adapts to the diverse and complex climatic conditions represented by China, covering usage habits across multiple dimensions. Upholding the integrated principles of safety, environmental protection, sustainable development, and aesthetics, Civro is committed to providing superior design inspiration and higher architectural value for global architects, designers, developers, and property owners. It aims to create personalized architectural facade system solutions for global landmark buildings and elite circles, establishing itself as a leading brand in global architectural facades.



## **CIVRÖ GmbH**

Schweinfurter Str. 7, 97080 Würzburg, Germany

## **CIVRO Building Technology(Guangdong)Co.,Ltd**

3<sup>rd</sup> Floor,Nanhai Dalí Aluminium Building, Lingnan Road,Foshan,China

■ [www.civro.com](http://www.civro.com)



Facebook



Official Website

### **Note:**

All product catalogs and planning data such as product parameters and performances, detailed drawings, attachment to building structure drawings and CAD drawings, which you obtain from our website, digital centre, franchisers or other channels and which you can save to your computer, are examples which are intended to help you plan and design your project. These contents must be checked for its suitability in the relevant structural scenario. The technical and legal regulations, the site conditions, and the design and structural requirements, must be assessed and planned independently by the developer and observed by the company contracted to do the work. Data or descriptions in these documents may be modified or amended due to technique improvement or design optimisation. **PLEASE BE AWARE OF NECESSITY OF PRE-CHECK TO AVOID ANY MISUNDERSTANDING OR PLANNING LOSE.**